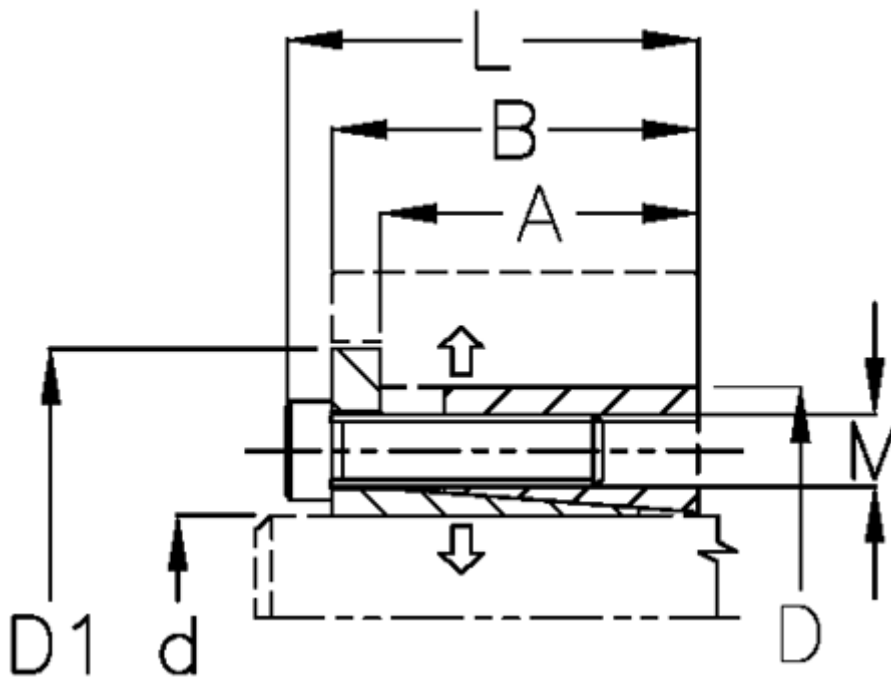


Article number: 434600180

Description: Rota-fix shaft-hub connection ES 180x235
Steel

Note: Self centering - high transmissible torque. During the clamping, the hub can axially displace.

Measures



| | | | |
|---------------|--------|---|---------|
| A mm | = 49.0 | M mm | = M14 |
| B mm | = 64.0 | P N/mm ² surface pressure on shaft/hub | = 110 |
| D1 mm | = 269 | Surface roughness | = - |
| d H8 mm | = 180 | T N m torque | = 35000 |
| D mm | = 235 | Ts N m bolt tightening torque | = 230 |
| Fit tolerance | = - | | |
| F kN torque | = 500 | | |
| L mm | = 78 | | |